

FOR IMMEDIATE RELEASE

Homer Watson House & Gallery launches winter 2022 season with Eastwood Collegiate Institute's annual exhibition, *Surface Tension* on January 20

January 14 through to January 30, 2022

Virtual opening reception January 20 at 7pm

Some artists will be in attendance.



Ana Nery, *Dreamer*, 2021. Image courtesy of the artist.

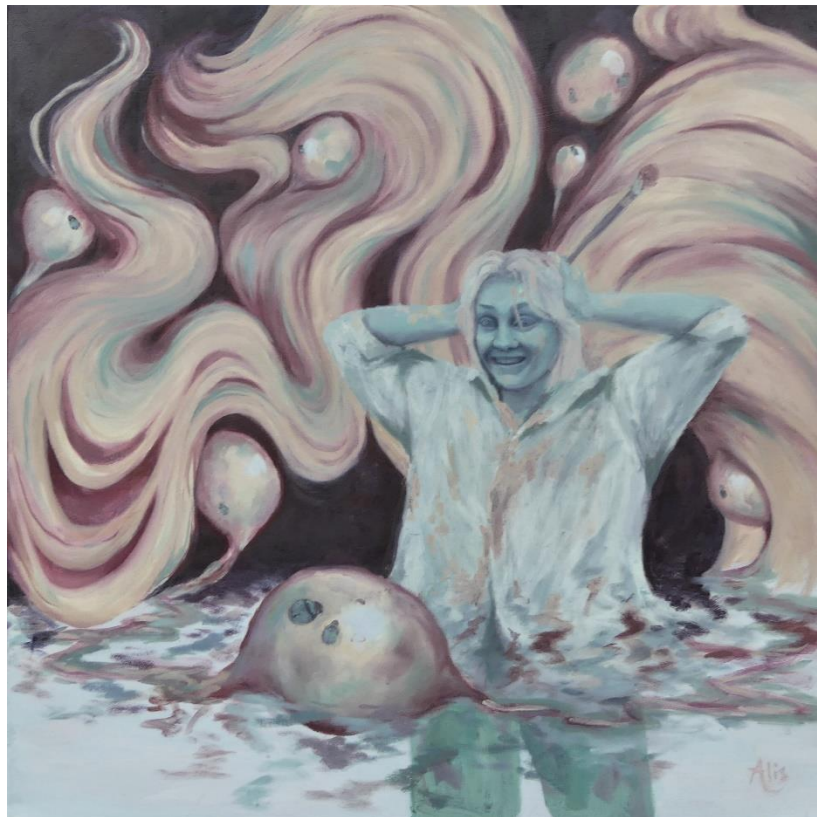
December 16, 2021, Kitchener, ON: This January, Homer Watson House & Gallery is thrilled to present the exhibition, *Surface Tension*. This annual show provides a unique opportunity for

art students at Eastwood Collegiate Institute to engage with a professional gallery in their community and learn how to plan and execute an exhibition. Join us for a virtual opening reception on Thursday, January 20 at 7pm, students will be in attendance to share more details about their works.

Working at the intersection of materiality and consciousness, each artist created immersive and thoughtful works, which challenged and explored the boundaries of the surface—both physically and subjectively. Artists explored material, process, and technique to render artworks that thoughtfully use sanding, layering, stitching, and folding, all intended to draw focus to the dynamic potential of the surface.

Indicative of the spirit of our current reality, *Surface Tension* brings together works that wrestle with the tensions of a global pandemic, widespread social unrest, natural disasters, and an uncertain future.

Please join us for the virtual opening reception on Thursday, January 20 at 7pm.



Alis Dychuck, *Fruits of my labour*, Oil and acrylic on canvas, 2021. Image courtesy of the artist.

About Homer Watson House & Gallery:

Homer Watson House & Gallery is the homestead of Homer Watson, Canada's first internationally recognized landscape artist (1855-1936). In 1980, the house and surrounding three-acre property were designated under the Ontario Heritage Act as being of architectural

and historic significance. HWHG is dedicated to preserving and celebrating the legacy of Homer Watson's creative spirit by stimulating the appreciation, enjoyment, and practice of the visual arts.

Homer Watson House & Gallery is wheelchair accessible.

GALLERY HOURS:

Tuesday to Sunday: 10am – 4pm

For more information please contact:

Alexandra Hartstone
Marketing and Development Officer
Homer Watson House & Gallery
519-748-4377
marketing@homerwatson.on.ca
www.homerwatson.on.ca